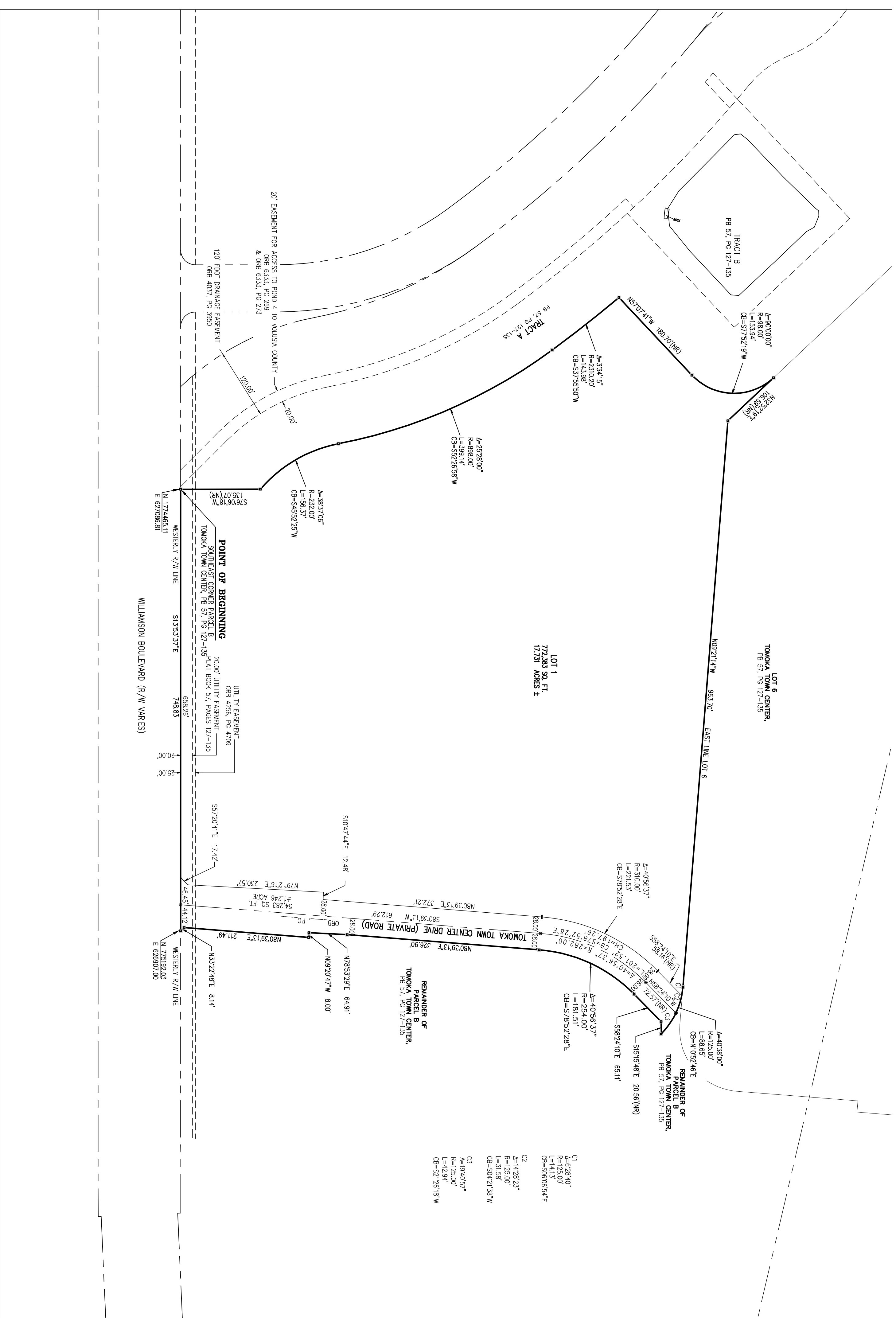


# TOMOKA TOWN CENTER PARCEL B PARTIAL REPLAT

BEING A PORTION OF PARCEL B, TOMOKA TOWN CENTER, AS RECORDED IN PLAT BOOK 57, PAGES 127-135, PUBLIC RECORDS OF VOLUSIA COUNTY, FLORIDA AND BEING IN SECTION 10, TOWNSHIP 15 SOUTH, RANGE 32 EAST, CITY OF DAYTONA BEACH, VOLUSIA COUNTY, FLORIDA

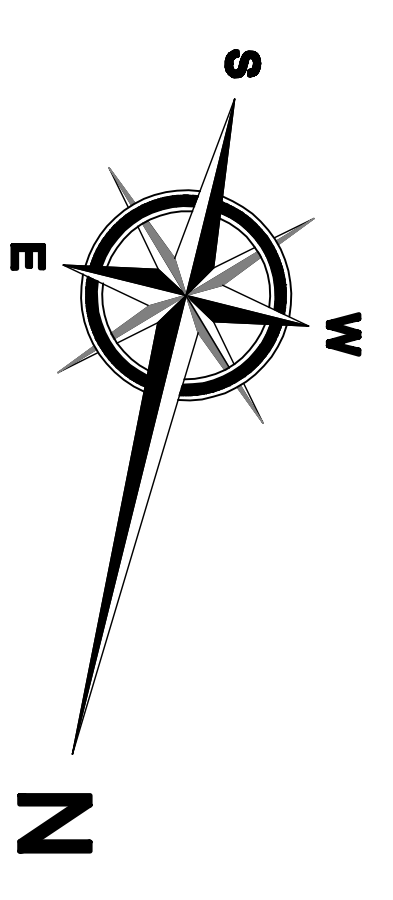
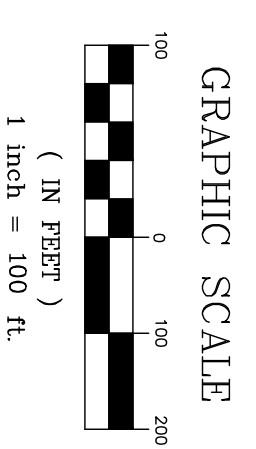
MAP BOOK: --- PAGE: ---



- C1  
A=678.40'  
R=123.00'  
CB=50005.44'E
- C2  
A=1428.23'  
R=114.00'  
L=11.88'  
CB=50421.38'W
- C3  
A=1400.37'  
R=150.00'  
L=8.94'  
CB=52726.18'W

### LEGEND

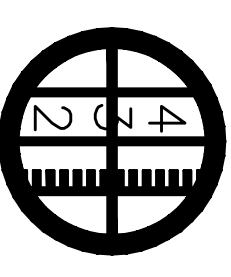
A	DELTA OR CENTRAL ANGLE
R	RADIUS
L	ARC LENGTH
CB	CHORD BEARING
C	CHORD LENGTH
LB	LICENSED BUSINESS
LS	LAND SURVEYOR
R/W	RIGHT OF WAY
ORB	OFFICIAL RECORDS BOOK
PC	PAGE
C.A.	COMMON AREA
U.E.	UTILITY EASEMENT



### LEGEND

■	DENOTES PERMANENT REFERENCE MONUMENT SET 4"x4" CONCRETE MONUMENT STAMPED P.M. LB 3019.
△	DENOTES N.M.L. & C.M.P. SET STAMPED P.M. LB 3019.
I	DENOTES P.C. / P.T.

PREPARED BY:  
**SLIGER & ASSOCIATES, INC.**  
PROFESSIONAL LAND SURVEYORS



3921 NOVA ROAD  
DAYTONA BEACH, FLORIDA 32117  
PHONE (386) 761-4385  
LICENSED BUSINESS CERTIFICATION NO. 3019