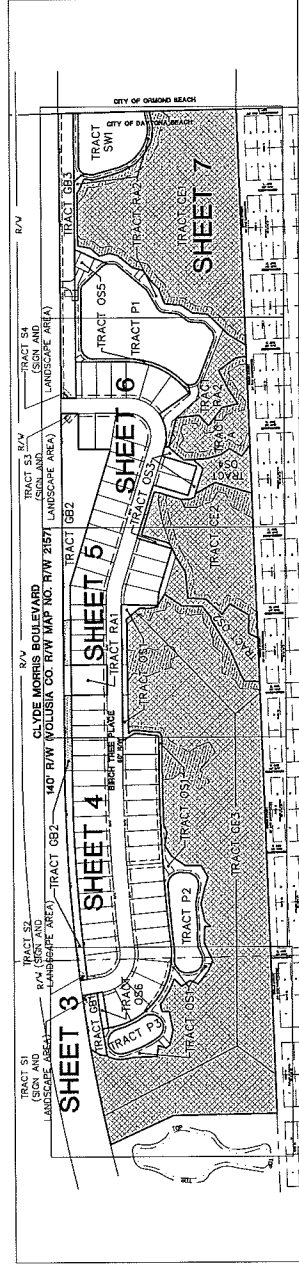
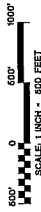


BIRCHWOOD SUBDIVISION
 PART OF SECTION 32, TOWNSHIP 14 SOUTH, RANGE 32 EAST
 CITY OF DAYTONA BEACH, VOLUSIA COUNTY, FLORIDA



SHEET KEY MAP

COMMON SYMBOLS AND ABBREVIATIONS

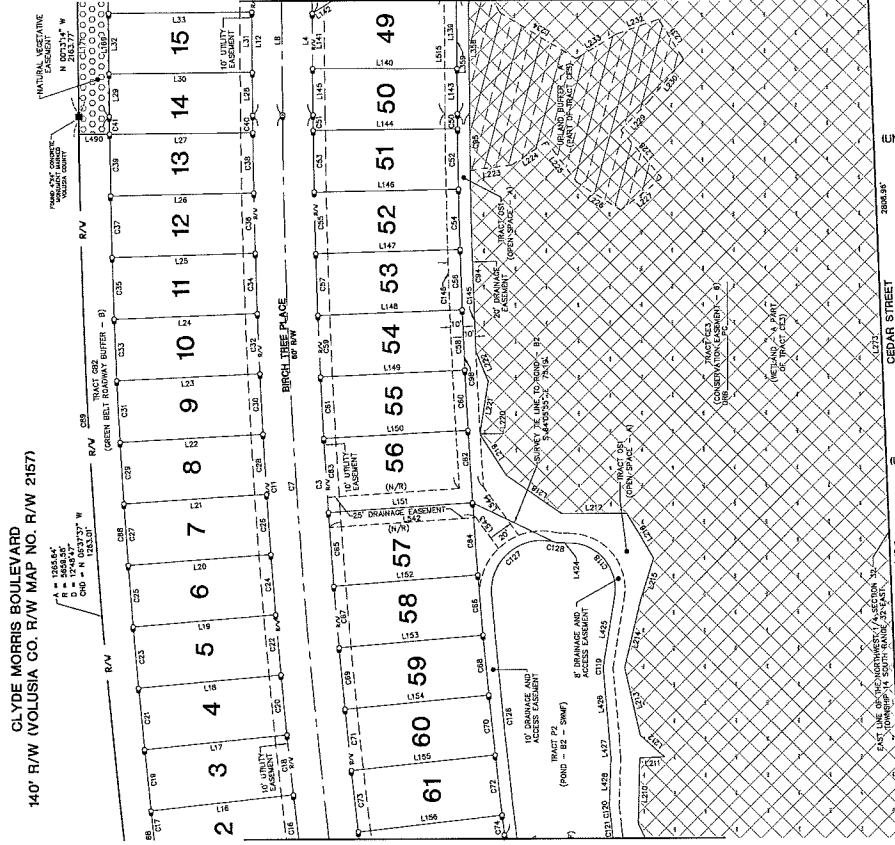
| | | | | | |
|-----|----------------------|-----|------------------------|-----|---------------------|
| 4 | DELTA ANGLE (SQUARE) | RE | PROFESSIONAL ENGINEER | SW | SEASONAL HIGH WATER |
| 5 | ADJUSTED | RI | POINT OF INTERSECTION | SWM | SEWER |
| 6 | ADJUSTED | PL | POINT OF TANGENCY | SWM | SEWER |
| 7 | ADJUSTED | POC | POINT OF COMMENCEMENT | SWM | SEWER |
| 8 | ADJUSTED | POI | POINT OF INTERSECTION | SWM | SEWER |
| 9 | ADJUSTED | POB | POINT OF BEGINNING | SWM | SEWER |
| 10 | ADJUSTED | POE | POINT OF ESTABLISHMENT | SWM | SEWER |
| 11 | ADJUSTED | POF | POINT OF FUTURE | SWM | SEWER |
| 12 | ADJUSTED | POG | POINT OF GRADIENT | SWM | SEWER |
| 13 | ADJUSTED | POH | POINT OF HIGH | SWM | SEWER |
| 14 | ADJUSTED | POI | POINT OF INTERSECTION | SWM | SEWER |
| 15 | ADJUSTED | POJ | POINT OF JUNCTION | SWM | SEWER |
| 16 | ADJUSTED | POK | POINT OF KICK | SWM | SEWER |
| 17 | ADJUSTED | POL | POINT OF LAYOUT | SWM | SEWER |
| 18 | ADJUSTED | POM | POINT OF MOUNTAIN | SWM | SEWER |
| 19 | ADJUSTED | PON | POINT OF NORTH | SWM | SEWER |
| 20 | ADJUSTED | POO | POINT OF OCEAN | SWM | SEWER |
| 21 | ADJUSTED | POP | POINT OF POND | SWM | SEWER |
| 22 | ADJUSTED | POQ | POINT OF QUARTER | SWM | SEWER |
| 23 | ADJUSTED | POR | POINT OF ROAD | SWM | SEWER |
| 24 | ADJUSTED | POS | POINT OF SURFACE | SWM | SEWER |
| 25 | ADJUSTED | POT | POINT OF TANGENT | SWM | SEWER |
| 26 | ADJUSTED | POU | POINT OF UTILITY | SWM | SEWER |
| 27 | ADJUSTED | POV | POINT OF VALLEY | SWM | SEWER |
| 28 | ADJUSTED | POW | POINT OF WATER | SWM | SEWER |
| 29 | ADJUSTED | POX | POINT OF X | SWM | SEWER |
| 30 | ADJUSTED | POY | POINT OF Y | SWM | SEWER |
| 31 | ADJUSTED | POZ | POINT OF Z | SWM | SEWER |
| 32 | ADJUSTED | POA | POINT OF AREA | SWM | SEWER |
| 33 | ADJUSTED | POB | POINT OF BOUNDARY | SWM | SEWER |
| 34 | ADJUSTED | POC | POINT OF CURVE | SWM | SEWER |
| 35 | ADJUSTED | POD | POINT OF DRAINAGE | SWM | SEWER |
| 36 | ADJUSTED | POE | POINT OF ELEVATION | SWM | SEWER |
| 37 | ADJUSTED | POF | POINT OF FUTURE | SWM | SEWER |
| 38 | ADJUSTED | POG | POINT OF GRADIENT | SWM | SEWER |
| 39 | ADJUSTED | POH | POINT OF HIGH | SWM | SEWER |
| 40 | ADJUSTED | POI | POINT OF INTERSECTION | SWM | SEWER |
| 41 | ADJUSTED | POJ | POINT OF JUNCTION | SWM | SEWER |
| 42 | ADJUSTED | POK | POINT OF KICK | SWM | SEWER |
| 43 | ADJUSTED | POL | POINT OF LAYOUT | SWM | SEWER |
| 44 | ADJUSTED | POM | POINT OF MOUNTAIN | SWM | SEWER |
| 45 | ADJUSTED | PON | POINT OF NORTH | SWM | SEWER |
| 46 | ADJUSTED | POO | POINT OF OCEAN | SWM | SEWER |
| 47 | ADJUSTED | POP | POINT OF POND | SWM | SEWER |
| 48 | ADJUSTED | POQ | POINT OF QUARTER | SWM | SEWER |
| 49 | ADJUSTED | POR | POINT OF ROAD | SWM | SEWER |
| 50 | ADJUSTED | POS | POINT OF SURFACE | SWM | SEWER |
| 51 | ADJUSTED | POT | POINT OF TANGENT | SWM | SEWER |
| 52 | ADJUSTED | POU | POINT OF UTILITY | SWM | SEWER |
| 53 | ADJUSTED | POV | POINT OF VALLEY | SWM | SEWER |
| 54 | ADJUSTED | POW | POINT OF WATER | SWM | SEWER |
| 55 | ADJUSTED | POX | POINT OF X | SWM | SEWER |
| 56 | ADJUSTED | POY | POINT OF Y | SWM | SEWER |
| 57 | ADJUSTED | POZ | POINT OF Z | SWM | SEWER |
| 58 | ADJUSTED | POA | POINT OF AREA | SWM | SEWER |
| 59 | ADJUSTED | POB | POINT OF BOUNDARY | SWM | SEWER |
| 60 | ADJUSTED | POC | POINT OF CURVE | SWM | SEWER |
| 61 | ADJUSTED | POD | POINT OF DRAINAGE | SWM | SEWER |
| 62 | ADJUSTED | POE | POINT OF ELEVATION | SWM | SEWER |
| 63 | ADJUSTED | POF | POINT OF FUTURE | SWM | SEWER |
| 64 | ADJUSTED | POG | POINT OF GRADIENT | SWM | SEWER |
| 65 | ADJUSTED | POH | POINT OF HIGH | SWM | SEWER |
| 66 | ADJUSTED | POI | POINT OF INTERSECTION | SWM | SEWER |
| 67 | ADJUSTED | POJ | POINT OF JUNCTION | SWM | SEWER |
| 68 | ADJUSTED | POK | POINT OF KICK | SWM | SEWER |
| 69 | ADJUSTED | POL | POINT OF LAYOUT | SWM | SEWER |
| 70 | ADJUSTED | POM | POINT OF MOUNTAIN | SWM | SEWER |
| 71 | ADJUSTED | PON | POINT OF NORTH | SWM | SEWER |
| 72 | ADJUSTED | POO | POINT OF OCEAN | SWM | SEWER |
| 73 | ADJUSTED | POP | POINT OF POND | SWM | SEWER |
| 74 | ADJUSTED | POQ | POINT OF QUARTER | SWM | SEWER |
| 75 | ADJUSTED | POR | POINT OF ROAD | SWM | SEWER |
| 76 | ADJUSTED | POS | POINT OF SURFACE | SWM | SEWER |
| 77 | ADJUSTED | POT | POINT OF TANGENT | SWM | SEWER |
| 78 | ADJUSTED | POU | POINT OF UTILITY | SWM | SEWER |
| 79 | ADJUSTED | POV | POINT OF VALLEY | SWM | SEWER |
| 80 | ADJUSTED | POW | POINT OF WATER | SWM | SEWER |
| 81 | ADJUSTED | POX | POINT OF X | SWM | SEWER |
| 82 | ADJUSTED | POY | POINT OF Y | SWM | SEWER |
| 83 | ADJUSTED | POZ | POINT OF Z | SWM | SEWER |
| 84 | ADJUSTED | POA | POINT OF AREA | SWM | SEWER |
| 85 | ADJUSTED | POB | POINT OF BOUNDARY | SWM | SEWER |
| 86 | ADJUSTED | POC | POINT OF CURVE | SWM | SEWER |
| 87 | ADJUSTED | POD | POINT OF DRAINAGE | SWM | SEWER |
| 88 | ADJUSTED | POE | POINT OF ELEVATION | SWM | SEWER |
| 89 | ADJUSTED | POF | POINT OF FUTURE | SWM | SEWER |
| 90 | ADJUSTED | POG | POINT OF GRADIENT | SWM | SEWER |
| 91 | ADJUSTED | POH | POINT OF HIGH | SWM | SEWER |
| 92 | ADJUSTED | POI | POINT OF INTERSECTION | SWM | SEWER |
| 93 | ADJUSTED | POJ | POINT OF JUNCTION | SWM | SEWER |
| 94 | ADJUSTED | POK | POINT OF KICK | SWM | SEWER |
| 95 | ADJUSTED | POL | POINT OF LAYOUT | SWM | SEWER |
| 96 | ADJUSTED | POM | POINT OF MOUNTAIN | SWM | SEWER |
| 97 | ADJUSTED | PON | POINT OF NORTH | SWM | SEWER |
| 98 | ADJUSTED | POO | POINT OF OCEAN | SWM | SEWER |
| 99 | ADJUSTED | POP | POINT OF POND | SWM | SEWER |
| 100 | ADJUSTED | POQ | POINT OF QUARTER | SWM | SEWER |

ATS NO. 2013-GSP-1001
 CHECKED JAW
 SHEET NO. 2 OF 7
 FILE LOCATION: S:\Projects\2013\2013-GSP-1001\1001-1000\1001-1000.dwg
 DATE: 10/11/13
 DRAWN BY: JAW

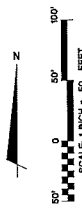
ATS Land Surveying, LLC
 1822 N. US HWY. 1, SUITE 304
 ORMOND BEACH, FL 32174
 Phone: 386.546.8218
 Fax: 386.546.8218
 Copyright 2011

BIRCHWOOD SUBDIVISION
 PART OF SECTION 32, TOWNSHIP 14 SOUTH, RANGE 32 EAST
 CITY OF DAYTONA BEACH, VOLUSIA COUNTY, FLORIDA

CLYDE MORRIS BOULEVARD
 140' R/W (VOLUSIA CO. R/W MAP NO. R/W 2167)



| LOT | AREA | PERMITS | REMARKS |
|-----|-----------|---------|---------|
| 2 | 10,120.00 | | |
| 3 | 10,120.00 | | |
| 4 | 10,120.00 | | |
| 5 | 10,120.00 | | |
| 6 | 10,120.00 | | |
| 7 | 10,120.00 | | |
| 8 | 10,120.00 | | |
| 9 | 10,120.00 | | |
| 10 | 10,120.00 | | |
| 11 | 10,120.00 | | |
| 12 | 10,120.00 | | |
| 13 | 10,120.00 | | |
| 14 | 10,120.00 | | |
| 15 | 10,120.00 | | |
| 16 | 10,120.00 | | |
| 17 | 10,120.00 | | |
| 18 | 10,120.00 | | |
| 19 | 10,120.00 | | |
| 20 | 10,120.00 | | |
| 21 | 10,120.00 | | |
| 22 | 10,120.00 | | |
| 23 | 10,120.00 | | |
| 24 | 10,120.00 | | |
| 25 | 10,120.00 | | |
| 26 | 10,120.00 | | |
| 27 | 10,120.00 | | |
| 28 | 10,120.00 | | |
| 29 | 10,120.00 | | |
| 30 | 10,120.00 | | |
| 31 | 10,120.00 | | |
| 32 | 10,120.00 | | |
| 33 | 10,120.00 | | |
| 34 | 10,120.00 | | |
| 35 | 10,120.00 | | |
| 36 | 10,120.00 | | |
| 37 | 10,120.00 | | |
| 38 | 10,120.00 | | |
| 39 | 10,120.00 | | |
| 40 | 10,120.00 | | |
| 41 | 10,120.00 | | |
| 42 | 10,120.00 | | |
| 43 | 10,120.00 | | |
| 44 | 10,120.00 | | |
| 45 | 10,120.00 | | |
| 46 | 10,120.00 | | |
| 47 | 10,120.00 | | |
| 48 | 10,120.00 | | |
| 49 | 10,120.00 | | |
| 50 | 10,120.00 | | |
| 51 | 10,120.00 | | |
| 52 | 10,120.00 | | |
| 53 | 10,120.00 | | |
| 54 | 10,120.00 | | |
| 55 | 10,120.00 | | |
| 56 | 10,120.00 | | |
| 57 | 10,120.00 | | |
| 58 | 10,120.00 | | |
| 59 | 10,120.00 | | |
| 60 | 10,120.00 | | |
| 61 | 10,120.00 | | |



| LOT | AREA | PERMITS | REMARKS |
|-----|-----------|---------|---------|
| 62 | 10,120.00 | | |
| 63 | 10,120.00 | | |
| 64 | 10,120.00 | | |
| 65 | 10,120.00 | | |
| 66 | 10,120.00 | | |
| 67 | 10,120.00 | | |
| 68 | 10,120.00 | | |
| 69 | 10,120.00 | | |
| 70 | 10,120.00 | | |
| 71 | 10,120.00 | | |
| 72 | 10,120.00 | | |
| 73 | 10,120.00 | | |
| 74 | 10,120.00 | | |
| 75 | 10,120.00 | | |
| 76 | 10,120.00 | | |
| 77 | 10,120.00 | | |
| 78 | 10,120.00 | | |
| 79 | 10,120.00 | | |
| 80 | 10,120.00 | | |
| 81 | 10,120.00 | | |
| 82 | 10,120.00 | | |
| 83 | 10,120.00 | | |
| 84 | 10,120.00 | | |
| 85 | 10,120.00 | | |
| 86 | 10,120.00 | | |
| 87 | 10,120.00 | | |
| 88 | 10,120.00 | | |
| 89 | 10,120.00 | | |
| 90 | 10,120.00 | | |
| 91 | 10,120.00 | | |
| 92 | 10,120.00 | | |
| 93 | 10,120.00 | | |
| 94 | 10,120.00 | | |
| 95 | 10,120.00 | | |
| 96 | 10,120.00 | | |
| 97 | 10,120.00 | | |
| 98 | 10,120.00 | | |
| 99 | 10,120.00 | | |
| 100 | 10,120.00 | | |

- SYMBOLS AND ABBREVIATIONS**
- ① 1/2" SET 1/2" R/W WITH 1/2" ALUMINUM RISK
 - ② SET 1/2" SETS WITH CAP LIFTS

LOT AREA TABLES FOR SHEET 4

| LOT | AREA |
|-----|-----------|
| 1 | 10,120.00 |
| 2 | 10,120.00 |
| 3 | 10,120.00 |
| 4 | 10,120.00 |
| 5 | 10,120.00 |
| 6 | 10,120.00 |
| 7 | 10,120.00 |
| 8 | 10,120.00 |
| 9 | 10,120.00 |
| 10 | 10,120.00 |
| 11 | 10,120.00 |
| 12 | 10,120.00 |
| 13 | 10,120.00 |
| 14 | 10,120.00 |
| 15 | 10,120.00 |
| 16 | 10,120.00 |
| 17 | 10,120.00 |
| 18 | 10,120.00 |
| 19 | 10,120.00 |
| 20 | 10,120.00 |
| 21 | 10,120.00 |
| 22 | 10,120.00 |
| 23 | 10,120.00 |
| 24 | 10,120.00 |
| 25 | 10,120.00 |
| 26 | 10,120.00 |
| 27 | 10,120.00 |
| 28 | 10,120.00 |
| 29 | 10,120.00 |
| 30 | 10,120.00 |
| 31 | 10,120.00 |
| 32 | 10,120.00 |
| 33 | 10,120.00 |
| 34 | 10,120.00 |
| 35 | 10,120.00 |
| 36 | 10,120.00 |
| 37 | 10,120.00 |
| 38 | 10,120.00 |
| 39 | 10,120.00 |
| 40 | 10,120.00 |
| 41 | 10,120.00 |
| 42 | 10,120.00 |
| 43 | 10,120.00 |
| 44 | 10,120.00 |
| 45 | 10,120.00 |
| 46 | 10,120.00 |
| 47 | 10,120.00 |
| 48 | 10,120.00 |
| 49 | 10,120.00 |
| 50 | 10,120.00 |
| 51 | 10,120.00 |
| 52 | 10,120.00 |
| 53 | 10,120.00 |
| 54 | 10,120.00 |
| 55 | 10,120.00 |
| 56 | 10,120.00 |
| 57 | 10,120.00 |
| 58 | 10,120.00 |
| 59 | 10,120.00 |
| 60 | 10,120.00 |
| 61 | 10,120.00 |
| 62 | 10,120.00 |
| 63 | 10,120.00 |
| 64 | 10,120.00 |
| 65 | 10,120.00 |
| 66 | 10,120.00 |
| 67 | 10,120.00 |
| 68 | 10,120.00 |
| 69 | 10,120.00 |
| 70 | 10,120.00 |
| 71 | 10,120.00 |
| 72 | 10,120.00 |
| 73 | 10,120.00 |
| 74 | 10,120.00 |
| 75 | 10,120.00 |
| 76 | 10,120.00 |
| 77 | 10,120.00 |
| 78 | 10,120.00 |
| 79 | 10,120.00 |
| 80 | 10,120.00 |
| 81 | 10,120.00 |
| 82 | 10,120.00 |
| 83 | 10,120.00 |
| 84 | 10,120.00 |
| 85 | 10,120.00 |
| 86 | 10,120.00 |
| 87 | 10,120.00 |
| 88 | 10,120.00 |
| 89 | 10,120.00 |
| 90 | 10,120.00 |
| 91 | 10,120.00 |
| 92 | 10,120.00 |
| 93 | 10,120.00 |
| 94 | 10,120.00 |
| 95 | 10,120.00 |
| 96 | 10,120.00 |
| 97 | 10,120.00 |
| 98 | 10,120.00 |
| 99 | 10,120.00 |
| 100 | 10,120.00 |

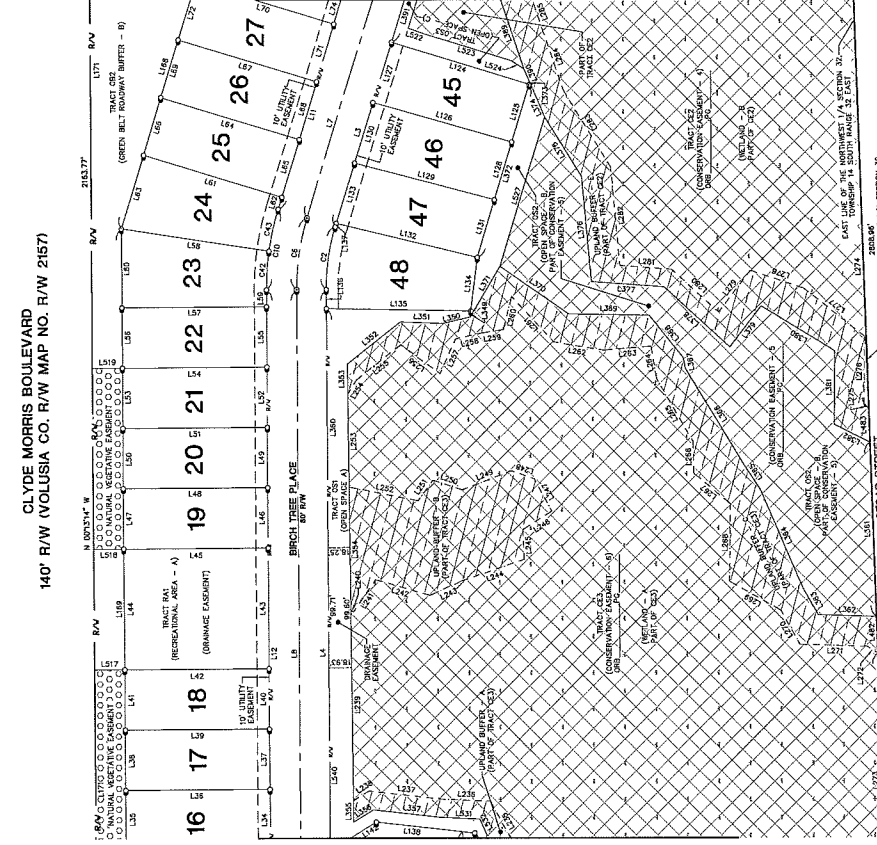
ATS NO. 2015-052-0001
 CHECKED JMM
 SHEET NO. 4 OF 7
 FILE LOCATION: 513 S. Orange Avenue
 32000 DAYTONA BEACH, FLORIDA
 PREPARED BY: JMM 10/10/15

- IDENTIFIED USES AND NATURAL BUFFER
- IDENTIFIED CONSERVATION EASEMENT AREA
- IDENTIFIED WETLAND AREA
- IDENTIFIED US-100 BUFFER

ATS Land Surveying, LLC
 1802 N. US HWY. 1, SUITE 304
 ORLANDO, FL 32814-1480
 Phone: 407-886-4480
 Fax: 407-886-4482
 Copyright 2017

BIRCHWOOD SUBDIVISION
 PART OF SECTION 32, TOWNSHIP 14 SOUTH, RANGE 32 EAST
 CITY OF DAYTONA BEACH, VOLUSIA COUNTY, FLORIDA

CLYDE MORRIS BOULEVARD
 140' R/W (VOLUSIA CO. R/W MAP NO. R/W 2157)



DEED TABLE FOR SHEET 5

| LINE | BEARING | DISTANCE |
|------|---------------|----------|
| L1 | N 89°58'14" W | 546.43 |
| L2 | S 88°52'14" W | 546.43 |
| L3 | N 89°58'14" W | 546.43 |
| L4 | S 88°52'14" W | 546.43 |
| L5 | N 89°58'14" W | 546.43 |
| L6 | S 88°52'14" W | 546.43 |
| L7 | N 89°58'14" W | 546.43 |
| L8 | S 88°52'14" W | 546.43 |
| L9 | N 89°58'14" W | 546.43 |
| L10 | S 88°52'14" W | 546.43 |
| L11 | N 89°58'14" W | 546.43 |
| L12 | S 88°52'14" W | 546.43 |
| L13 | N 89°58'14" W | 546.43 |
| L14 | S 88°52'14" W | 546.43 |
| L15 | N 89°58'14" W | 546.43 |
| L16 | S 88°52'14" W | 546.43 |
| L17 | N 89°58'14" W | 546.43 |
| L18 | S 88°52'14" W | 546.43 |
| L19 | N 89°58'14" W | 546.43 |
| L20 | S 88°52'14" W | 546.43 |
| L21 | N 89°58'14" W | 546.43 |
| L22 | S 88°52'14" W | 546.43 |
| L23 | N 89°58'14" W | 546.43 |
| L24 | S 88°52'14" W | 546.43 |
| L25 | N 89°58'14" W | 546.43 |
| L26 | S 88°52'14" W | 546.43 |
| L27 | N 89°58'14" W | 546.43 |
| L28 | S 88°52'14" W | 546.43 |
| L29 | N 89°58'14" W | 546.43 |
| L30 | S 88°52'14" W | 546.43 |
| L31 | N 89°58'14" W | 546.43 |
| L32 | S 88°52'14" W | 546.43 |
| L33 | N 89°58'14" W | 546.43 |
| L34 | S 88°52'14" W | 546.43 |
| L35 | N 89°58'14" W | 546.43 |
| L36 | S 88°52'14" W | 546.43 |
| L37 | N 89°58'14" W | 546.43 |
| L38 | S 88°52'14" W | 546.43 |
| L39 | N 89°58'14" W | 546.43 |
| L40 | S 88°52'14" W | 546.43 |
| L41 | N 89°58'14" W | 546.43 |
| L42 | S 88°52'14" W | 546.43 |
| L43 | N 89°58'14" W | 546.43 |
| L44 | S 88°52'14" W | 546.43 |
| L45 | N 89°58'14" W | 546.43 |
| L46 | S 88°52'14" W | 546.43 |
| L47 | N 89°58'14" W | 546.43 |
| L48 | S 88°52'14" W | 546.43 |



LOT AREA TABLE FOR SHEET 5

| LOT | AREA |
|-----|-----------|
| 16 | 10,000.00 |
| 17 | 10,000.00 |
| 18 | 10,000.00 |
| 19 | 10,000.00 |
| 20 | 10,000.00 |
| 21 | 10,000.00 |
| 22 | 10,000.00 |
| 23 | 10,000.00 |
| 24 | 10,000.00 |
| 25 | 10,000.00 |
| 26 | 10,000.00 |
| 27 | 10,000.00 |
| 45 | 10,000.00 |
| 46 | 10,000.00 |
| 47 | 10,000.00 |
| 48 | 10,000.00 |

SYMBOLS AND ABBREVIATIONS

- ⊙ PCD - SET 5/4" R/W ROAD WITH ALUMINUM DISK
- ⊙ SET 1/2" REBAR WITH CAP LIFTS
- ▨ DENOTES UPLAND BUFFER
- ▨ DENOTES WETLAND AREA
- ▨ DENOTES WETLAND AREA
- ▨ DENOTES CONSERVATION EASEMENT AREA
- ▨ DENOTES CONSERVATION EASEMENT BUFFER
- ▨ DENOTES WETLAND AREA
- ▨ DENOTES UPLAND BUFFER

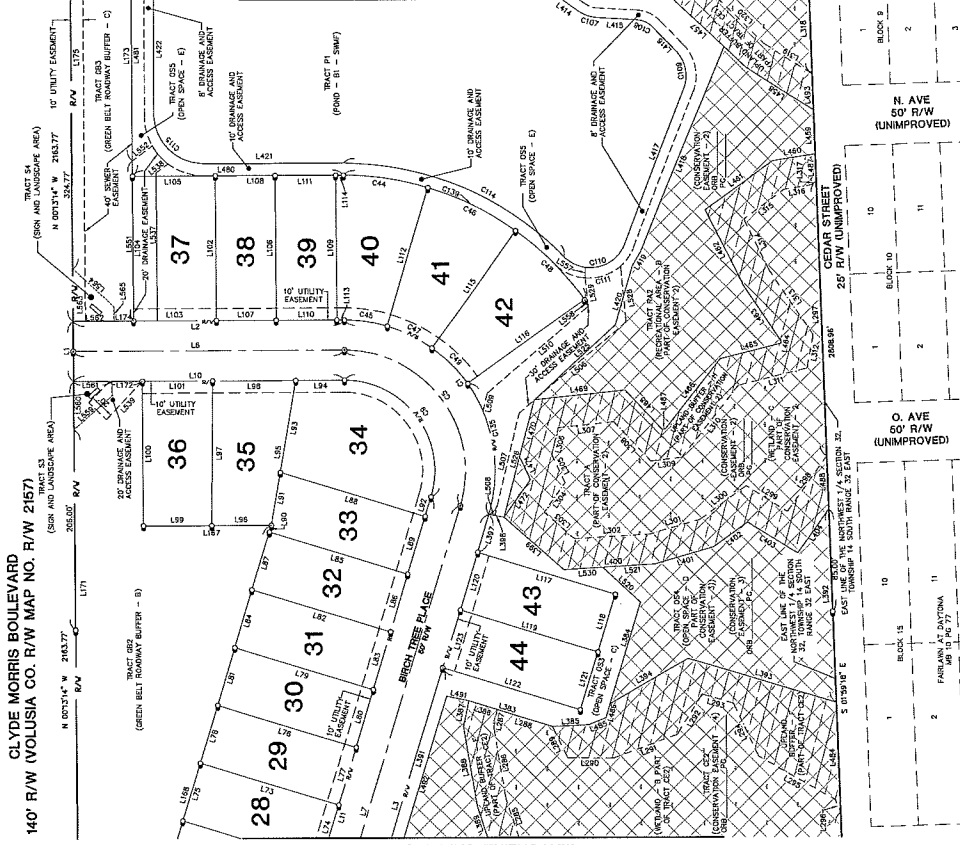
ATS Land
 Surveying, LLC
 1802 N. US HWY. 1, SUITE 304
 ORLANDO, FLORIDA 32814
 Phone: 385-448-4840
 Fax: 385-448-4818
 Copyright 2017

ATS NO. 2015-052-1000
 CHECKED: [Signature]
 SHEET NO. 5 OF 7
 FILE LOCATION: S:\Sub Files\2015\2015-052-1000\Case\BIRCHWOOD.PLT - 1 (REV. 10-09)

BIRCHWOOD SUBDIVISION

PART OF SECTION 32, TOWNSHIP 14 SOUTH, RANGE 32 EAST
CITY OF DAYTONA BEACH, VOLUSIA COUNTY, FLORIDA

CLYDE MORRIS BOULEVARD
140' R/W (VOLUSIA CO. R/W MAP NO. R/W 2167)



LOT AREA TABLE FOR SHEET 5

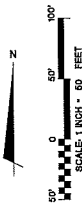
| LOT | AREA | LOT | AREA |
|-----|----------|-----|----------|
| L1 | 1,000.00 | L31 | 1,000.00 |
| L2 | 1,000.00 | L32 | 1,000.00 |
| L3 | 1,000.00 | L33 | 1,000.00 |
| L4 | 1,000.00 | L34 | 1,000.00 |
| L5 | 1,000.00 | L35 | 1,000.00 |
| L6 | 1,000.00 | L36 | 1,000.00 |
| L7 | 1,000.00 | L37 | 1,000.00 |
| L8 | 1,000.00 | L38 | 1,000.00 |
| L9 | 1,000.00 | L39 | 1,000.00 |
| L10 | 1,000.00 | L40 | 1,000.00 |
| L11 | 1,000.00 | L41 | 1,000.00 |
| L12 | 1,000.00 | L42 | 1,000.00 |
| L13 | 1,000.00 | L43 | 1,000.00 |
| L14 | 1,000.00 | L44 | 1,000.00 |

LOT AREA TABLE FOR SHEET 6

| LOT | AREA | LOT | AREA |
|-----|----------|-----|----------|
| L15 | 1,000.00 | L25 | 1,000.00 |
| L16 | 1,000.00 | L26 | 1,000.00 |
| L17 | 1,000.00 | L27 | 1,000.00 |
| L18 | 1,000.00 | L28 | 1,000.00 |
| L19 | 1,000.00 | L29 | 1,000.00 |
| L20 | 1,000.00 | L30 | 1,000.00 |

LOT AREA TABLE FOR SHEET 7

| LOT | AREA | LOT | AREA |
|-----|----------|-----|----------|
| L21 | 1,000.00 | L31 | 1,000.00 |
| L22 | 1,000.00 | L32 | 1,000.00 |
| L23 | 1,000.00 | L33 | 1,000.00 |
| L24 | 1,000.00 | L34 | 1,000.00 |
| L25 | 1,000.00 | L35 | 1,000.00 |
| L26 | 1,000.00 | L36 | 1,000.00 |
| L27 | 1,000.00 | L37 | 1,000.00 |
| L28 | 1,000.00 | L38 | 1,000.00 |
| L29 | 1,000.00 | L39 | 1,000.00 |
| L30 | 1,000.00 | L40 | 1,000.00 |



DATE: 03/15/2022
DRAWN BY: [Name]
CHECKED BY: [Name]
SHEET NO: 6 OF 7
FILE LOCATION: S:\3_Some Projects\2023\2023-03-15\001\001.dwg
PROJECT NO: 23-001

INDICATES UPLAND BUFFER
INDICATES RETAINMENT AREA
INDICATES CONSERVATION EASEMENT AREA
SET 1/2" REBAR WITH CAP UPRIGHT

INDICATES UPLAND BUFFER
INDICATES RETAINMENT AREA
INDICATES CONSERVATION EASEMENT AREA
SET 1/2" REBAR WITH CAP UPRIGHT

INDICATES UPLAND BUFFER
INDICATES RETAINMENT AREA
INDICATES CONSERVATION EASEMENT AREA
SET 1/2" REBAR WITH CAP UPRIGHT

INDICATES UPLAND BUFFER
INDICATES RETAINMENT AREA
INDICATES CONSERVATION EASEMENT AREA
SET 1/2" REBAR WITH CAP UPRIGHT

INDICATES UPLAND BUFFER
INDICATES RETAINMENT AREA
INDICATES CONSERVATION EASEMENT AREA
SET 1/2" REBAR WITH CAP UPRIGHT

INDICATES UPLAND BUFFER
INDICATES RETAINMENT AREA
INDICATES CONSERVATION EASEMENT AREA
SET 1/2" REBAR WITH CAP UPRIGHT

INDICATES UPLAND BUFFER
INDICATES RETAINMENT AREA
INDICATES CONSERVATION EASEMENT AREA
SET 1/2" REBAR WITH CAP UPRIGHT

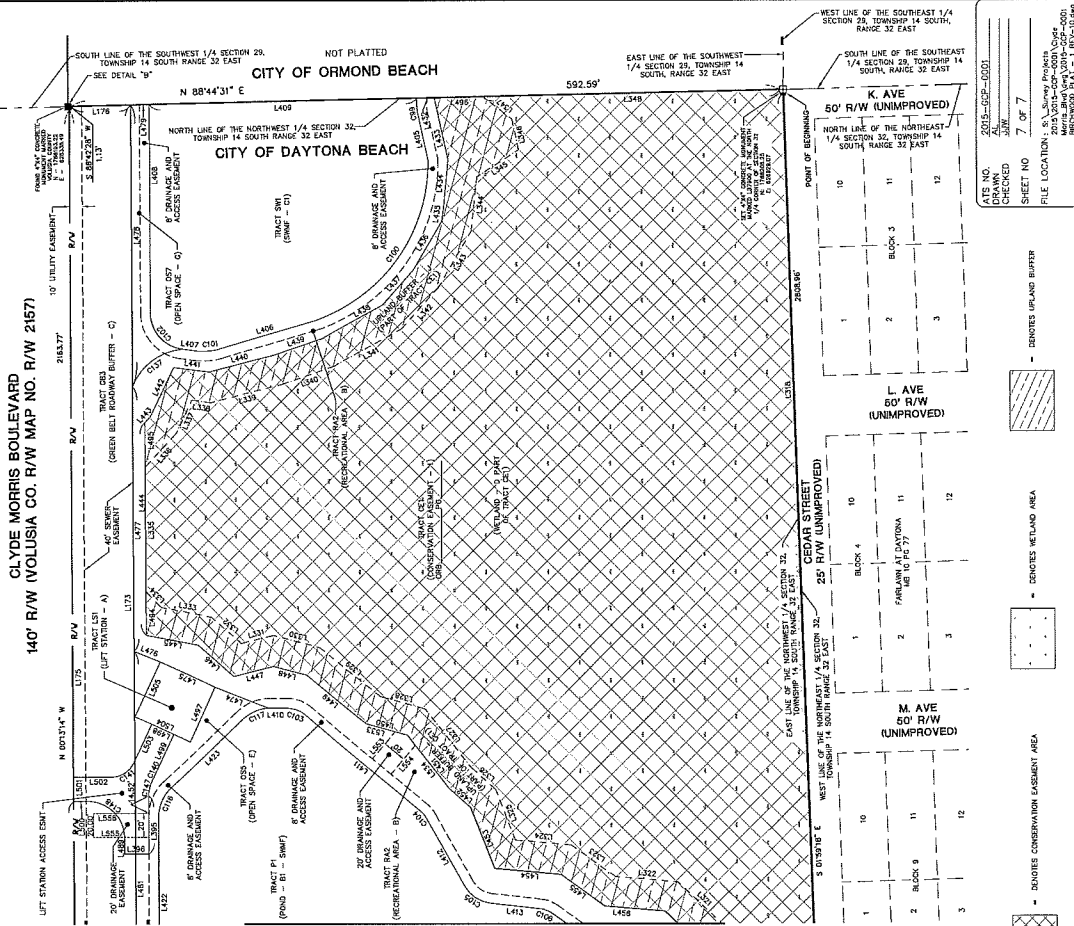
INDICATES UPLAND BUFFER
INDICATES RETAINMENT AREA
INDICATES CONSERVATION EASEMENT AREA
SET 1/2" REBAR WITH CAP UPRIGHT

ATS Land Surveying, LLC
1582 N. US HWY 1, SUITE 304
DAYTONA BEACH, FL 32117
Phone: 386-254-6400
Fax: 386-648-8218
Bartrow, FL
Contract: 2022

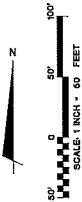
BIRCHWOOD SUBDIVISION

PART OF SECTION 32, TOWNSHIP 14 SOUTH, RANGE 32 EAST
CITY OF DAYTONA BEACH, VOLUSIA COUNTY, FLORIDA

Clyde Morris Boulevard
140' R/W (Volusia Co. R/W Map No. R/W 2157)



MATCHLINE SHEET 6

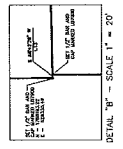


LINE TABLE FOR SHEET 7

| LINE | BEARING | DISTANCE | MARK |
|------|---------------|----------|---------|
| L101 | N 88°44'31" E | 177.8 | 592.59' |
| L102 | S 88°44'31" W | 177.8 | 592.59' |
| L103 | S 88°44'31" W | 177.8 | 592.59' |
| L104 | N 88°44'31" E | 177.8 | 592.59' |
| L105 | N 88°44'31" E | 177.8 | 592.59' |
| L106 | S 88°44'31" W | 177.8 | 592.59' |
| L107 | S 88°44'31" W | 177.8 | 592.59' |
| L108 | N 88°44'31" E | 177.8 | 592.59' |
| L109 | N 88°44'31" E | 177.8 | 592.59' |
| L110 | S 88°44'31" W | 177.8 | 592.59' |
| L111 | S 88°44'31" W | 177.8 | 592.59' |
| L112 | N 88°44'31" E | 177.8 | 592.59' |
| L113 | N 88°44'31" E | 177.8 | 592.59' |
| L114 | S 88°44'31" W | 177.8 | 592.59' |
| L115 | S 88°44'31" W | 177.8 | 592.59' |
| L116 | N 88°44'31" E | 177.8 | 592.59' |
| L117 | N 88°44'31" E | 177.8 | 592.59' |
| L118 | S 88°44'31" W | 177.8 | 592.59' |
| L119 | S 88°44'31" W | 177.8 | 592.59' |
| L120 | N 88°44'31" E | 177.8 | 592.59' |
| L121 | N 88°44'31" E | 177.8 | 592.59' |
| L122 | S 88°44'31" W | 177.8 | 592.59' |
| L123 | S 88°44'31" W | 177.8 | 592.59' |
| L124 | N 88°44'31" E | 177.8 | 592.59' |
| L125 | N 88°44'31" E | 177.8 | 592.59' |
| L126 | S 88°44'31" W | 177.8 | 592.59' |
| L127 | S 88°44'31" W | 177.8 | 592.59' |
| L128 | N 88°44'31" E | 177.8 | 592.59' |
| L129 | N 88°44'31" E | 177.8 | 592.59' |
| L130 | S 88°44'31" W | 177.8 | 592.59' |
| L131 | S 88°44'31" W | 177.8 | 592.59' |
| L132 | N 88°44'31" E | 177.8 | 592.59' |
| L133 | N 88°44'31" E | 177.8 | 592.59' |
| L134 | S 88°44'31" W | 177.8 | 592.59' |
| L135 | S 88°44'31" W | 177.8 | 592.59' |
| L136 | N 88°44'31" E | 177.8 | 592.59' |
| L137 | N 88°44'31" E | 177.8 | 592.59' |
| L138 | S 88°44'31" W | 177.8 | 592.59' |
| L139 | S 88°44'31" W | 177.8 | 592.59' |
| L140 | N 88°44'31" E | 177.8 | 592.59' |
| L141 | N 88°44'31" E | 177.8 | 592.59' |
| L142 | S 88°44'31" W | 177.8 | 592.59' |
| L143 | S 88°44'31" W | 177.8 | 592.59' |
| L144 | N 88°44'31" E | 177.8 | 592.59' |
| L145 | N 88°44'31" E | 177.8 | 592.59' |
| L146 | S 88°44'31" W | 177.8 | 592.59' |
| L147 | S 88°44'31" W | 177.8 | 592.59' |
| L148 | N 88°44'31" E | 177.8 | 592.59' |
| L149 | N 88°44'31" E | 177.8 | 592.59' |
| L150 | S 88°44'31" W | 177.8 | 592.59' |
| L151 | S 88°44'31" W | 177.8 | 592.59' |
| L152 | N 88°44'31" E | 177.8 | 592.59' |
| L153 | N 88°44'31" E | 177.8 | 592.59' |
| L154 | S 88°44'31" W | 177.8 | 592.59' |
| L155 | S 88°44'31" W | 177.8 | 592.59' |
| L156 | N 88°44'31" E | 177.8 | 592.59' |
| L157 | N 88°44'31" E | 177.8 | 592.59' |
| L158 | S 88°44'31" W | 177.8 | 592.59' |
| L159 | S 88°44'31" W | 177.8 | 592.59' |
| L160 | N 88°44'31" E | 177.8 | 592.59' |
| L161 | N 88°44'31" E | 177.8 | 592.59' |
| L162 | S 88°44'31" W | 177.8 | 592.59' |
| L163 | S 88°44'31" W | 177.8 | 592.59' |
| L164 | N 88°44'31" E | 177.8 | 592.59' |
| L165 | N 88°44'31" E | 177.8 | 592.59' |
| L166 | S 88°44'31" W | 177.8 | 592.59' |
| L167 | S 88°44'31" W | 177.8 | 592.59' |
| L168 | N 88°44'31" E | 177.8 | 592.59' |
| L169 | N 88°44'31" E | 177.8 | 592.59' |
| L170 | S 88°44'31" W | 177.8 | 592.59' |
| L171 | S 88°44'31" W | 177.8 | 592.59' |
| L172 | N 88°44'31" E | 177.8 | 592.59' |
| L173 | N 88°44'31" E | 177.8 | 592.59' |
| L174 | S 88°44'31" W | 177.8 | 592.59' |
| L175 | S 88°44'31" W | 177.8 | 592.59' |
| L176 | N 88°44'31" E | 177.8 | 592.59' |
| L177 | N 88°44'31" E | 177.8 | 592.59' |
| L178 | S 88°44'31" W | 177.8 | 592.59' |
| L179 | S 88°44'31" W | 177.8 | 592.59' |
| L180 | N 88°44'31" E | 177.8 | 592.59' |
| L181 | N 88°44'31" E | 177.8 | 592.59' |
| L182 | S 88°44'31" W | 177.8 | 592.59' |
| L183 | S 88°44'31" W | 177.8 | 592.59' |
| L184 | N 88°44'31" E | 177.8 | 592.59' |
| L185 | N 88°44'31" E | 177.8 | 592.59' |
| L186 | S 88°44'31" W | 177.8 | 592.59' |
| L187 | S 88°44'31" W | 177.8 | 592.59' |
| L188 | N 88°44'31" E | 177.8 | 592.59' |
| L189 | N 88°44'31" E | 177.8 | 592.59' |
| L190 | S 88°44'31" W | 177.8 | 592.59' |
| L191 | S 88°44'31" W | 177.8 | 592.59' |
| L192 | N 88°44'31" E | 177.8 | 592.59' |
| L193 | N 88°44'31" E | 177.8 | 592.59' |
| L194 | S 88°44'31" W | 177.8 | 592.59' |
| L195 | S 88°44'31" W | 177.8 | 592.59' |
| L196 | N 88°44'31" E | 177.8 | 592.59' |
| L197 | N 88°44'31" E | 177.8 | 592.59' |
| L198 | S 88°44'31" W | 177.8 | 592.59' |
| L199 | S 88°44'31" W | 177.8 | 592.59' |
| L200 | N 88°44'31" E | 177.8 | 592.59' |

LINE TABLE FOR SHEET 7

| LINE | BEARING | DISTANCE | MARK |
|------|---------------|----------|---------|
| L201 | N 88°44'31" E | 177.8 | 592.59' |
| L202 | S 88°44'31" W | 177.8 | 592.59' |
| L203 | S 88°44'31" W | 177.8 | 592.59' |
| L204 | N 88°44'31" E | 177.8 | 592.59' |
| L205 | N 88°44'31" E | 177.8 | 592.59' |
| L206 | S 88°44'31" W | 177.8 | 592.59' |
| L207 | S 88°44'31" W | 177.8 | 592.59' |
| L208 | N 88°44'31" E | 177.8 | 592.59' |
| L209 | N 88°44'31" E | 177.8 | 592.59' |
| L210 | S 88°44'31" W | 177.8 | 592.59' |
| L211 | S 88°44'31" W | 177.8 | 592.59' |
| L212 | N 88°44'31" E | 177.8 | 592.59' |
| L213 | N 88°44'31" E | 177.8 | 592.59' |
| L214 | S 88°44'31" W | 177.8 | 592.59' |
| L215 | S 88°44'31" W | 177.8 | 592.59' |
| L216 | N 88°44'31" E | 177.8 | 592.59' |
| L217 | N 88°44'31" E | 177.8 | 592.59' |
| L218 | S 88°44'31" W | 177.8 | 592.59' |
| L219 | S 88°44'31" W | 177.8 | 592.59' |
| L220 | N 88°44'31" E | 177.8 | 592.59' |
| L221 | N 88°44'31" E | 177.8 | 592.59' |
| L222 | S 88°44'31" W | 177.8 | 592.59' |
| L223 | S 88°44'31" W | 177.8 | 592.59' |
| L224 | N 88°44'31" E | 177.8 | 592.59' |
| L225 | N 88°44'31" E | 177.8 | 592.59' |
| L226 | S 88°44'31" W | 177.8 | 592.59' |
| L227 | S 88°44'31" W | 177.8 | 592.59' |
| L228 | N 88°44'31" E | 177.8 | 592.59' |
| L229 | N 88°44'31" E | 177.8 | 592.59' |
| L230 | S 88°44'31" W | 177.8 | 592.59' |
| L231 | S 88°44'31" W | 177.8 | 592.59' |
| L232 | N 88°44'31" E | 177.8 | 592.59' |
| L233 | N 88°44'31" E | 177.8 | 592.59' |
| L234 | S 88°44'31" W | 177.8 | 592.59' |
| L235 | S 88°44'31" W | 177.8 | 592.59' |
| L236 | N 88°44'31" E | 177.8 | 592.59' |
| L237 | N 88°44'31" E | 177.8 | 592.59' |
| L238 | S 88°44'31" W | 177.8 | 592.59' |
| L239 | S 88°44'31" W | 177.8 | 592.59' |
| L240 | N 88°44'31" E | 177.8 | 592.59' |



SYMBOLS AND ABBREVIATIONS

| | |
|----|--------------------------------|
| ED | PERM - SET AS NOTED |
| ○ | CON - SEE 1/2" R/W 100 |
| ● | W/TH ALUMINUM MARK |
| ⊕ | SEE 1/2" REBAR WITH CAP 187500 |

ATS Land Surveying, LLC
 602 N. US HWY 1, SUITE 104
 DAYTONA BEACH, FL 32117
 Phone: 386.264.8480
 Fax: 386.264.8418
 www.atsland.com
 COPYRIGHT 2017

DATE: 09/15/2017
 DRAWN: JAW
 CHECKED: JAW
 SHEET NO: 7 OF 7
 FILE LOCATION: S:\Projects\2017\09-15-17\09-15-17.dwg
 BIRCHWOOD SUBDIVISION

