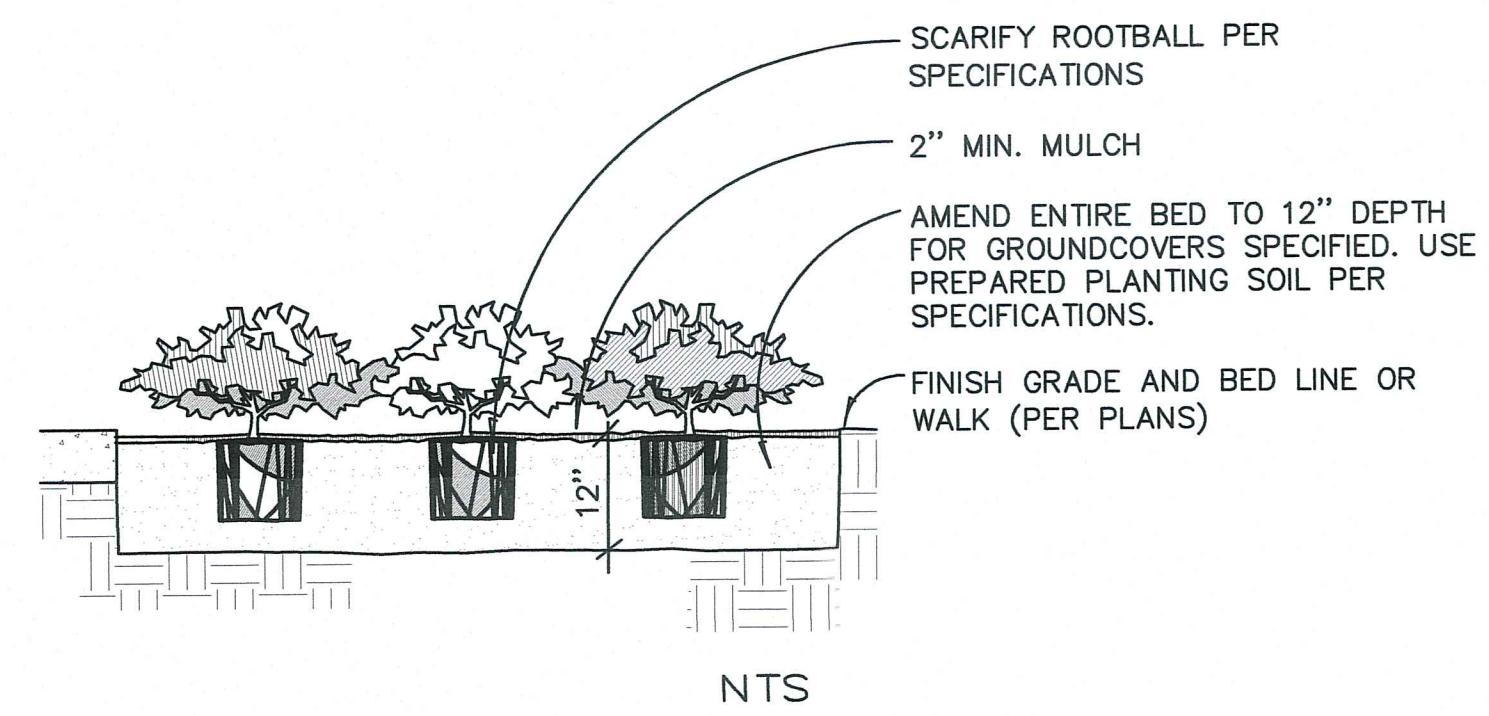


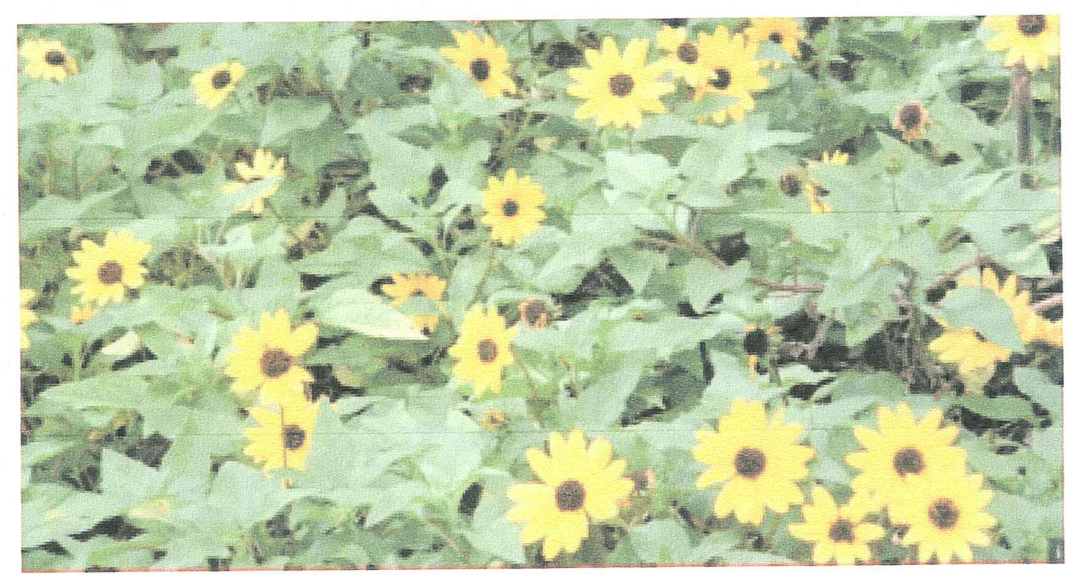
- GENERAL NOTES:
- OVERHEAD UTILITY EXIST ON THE SOUTH SIDE OF INTERNATIONAL SPEEDWAY BLVD. EAST IN THE PLANTING AREAS.
 - POSTED SPEED LIMIT ON INTERNATIONAL SPEEDWAY BLVD. EAST IS 30 MPH.


EXHIBIT A



NOTES:
1. CONTRACTOR SHALL ASSURE PERCOLATION OF ALL PLANTING BEDS/PITS PRIOR TO INSTALLATION.

TYPICAL GROUNDCOVER PLANTING



PLANT LIST					
SYMBOL	ABB.	QTY.	BOTANICAL NAME	COMMON NAME	SIZE
	FE	4,217	FELICIA ECHINATA	DUNE DAISY	4" POTS 15" O.C.

NO.	DATE	DESCRIPTION	BY
REVISIONS			
PARKER MYNCHENBERG & ASSOCIATES, INC.			
PROFESSIONAL ENGINEERS * LANDSCAPE ARCHITECTS 1729 RIDGEWOOD AVENUE HOLLY HILL, FLORIDA 32117 (386)677-6891 FAX(386)677-2114 E-MAIL: info@parkermynchenberg.com CERTIFICATE OF AUTHORIZATION NUMBER: 00003910			
LANDSCAPE PLAN AND DETAILS			
ISB PLANTING PLAN			
DAYTONA BEACH * FLORIDA			
FILE NO. DD.DWG	DESIGNER: P.MYNCHENBERG		
DATE: 7-14-16	CADD TECH: DE CILLA		
SCALE: 1"=80'	SHEET 1 OF 1		